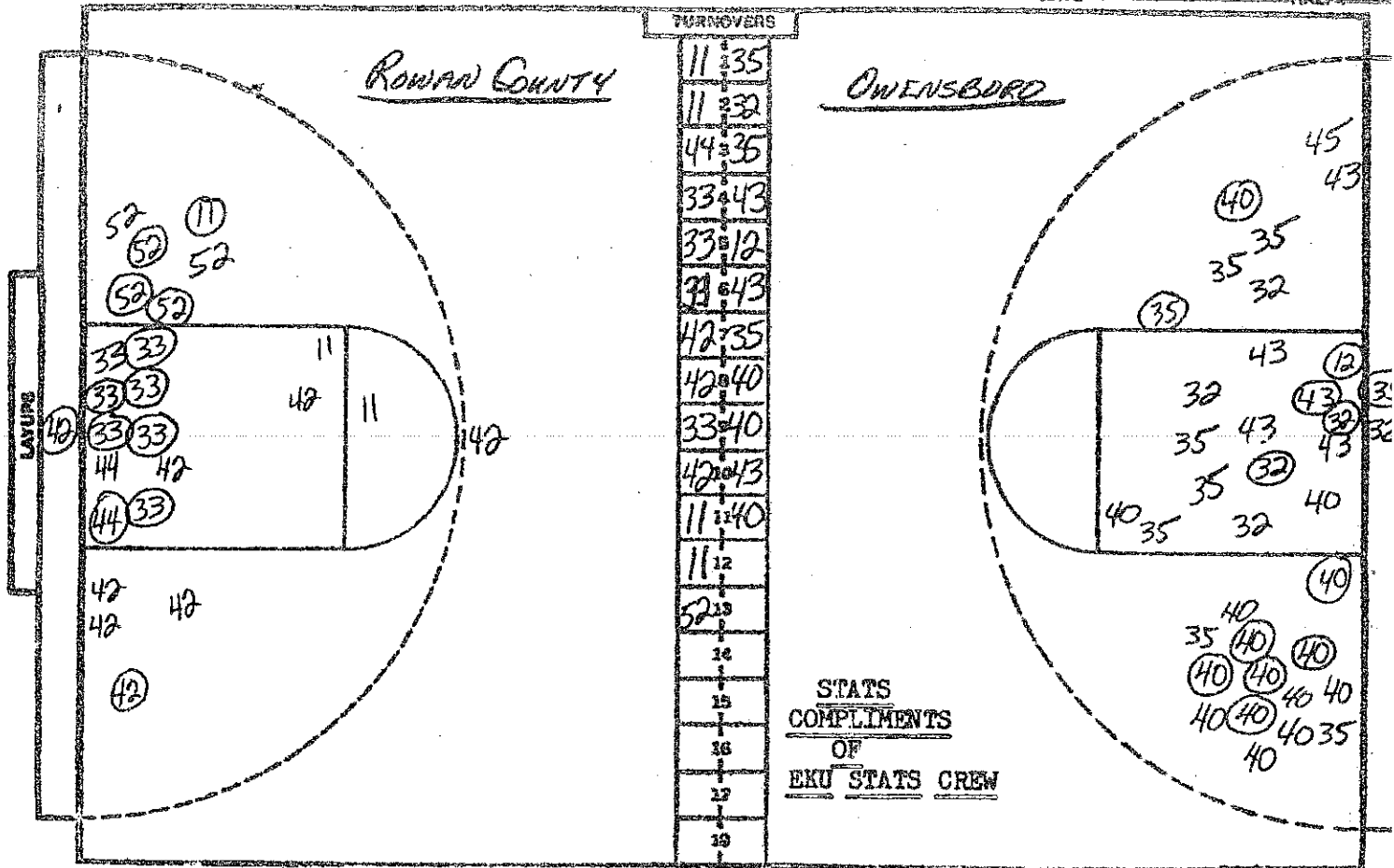


CASE CHART

Owensboro

AT Rowan County

DATE March 27, 1981 HALF FIA



NO.	ROWAN	PG-FGA	FT-FTA	RE	P	TP	A	
G	42	Karla May	2-8	1-2	3	1	5	5
G	11	Jeanne Cornett	1-3	0-0	0	1	2	2
C	44	Jelana Haney	1-2	2-2	1	1	4	2
F	52	Debbie DeHart	3-5	0-0	4	1	6	1
F	33	Mary Beth Hamm	6-7	0-0	7	1	12	0
	53	Lori Powers	-	-				
	34	Pam Anderson	-	-				
	24	Vivian Flora	-	-				
	43	Vonda Ramey	-	-				
	35	Caryn Anderson	-	-				
	23	Cindy Lawson	-	-				
	32	Susan Barker	-	-				
					0	DB		
<b>TOTALS</b>		<b>13-25</b>	<b>3-4</b>	<b>15</b>	<b>5</b>	<b>29</b>	<b>10</b>	

NO.	OWENSBORO	PG-FGA	FT-FTA	RE	P	TP	A	
G	35	Wendy Morton	2-9	2-2	2	0	6	6
G	40	Anita Griffith	7-15	0-0	3	1	14	0
C	12	Mary Todd Horell	1-1	0-0	2	1	2	0
F	32	Georgia Moss	2-6	0-0	2	0	4	1
F	43	Donetta Owsley	1-5	1-1	5	3	3	0
	22	Laura Gaddis	-	-				
	50	Gathy Watkins	-	-				
	31	Lisa Sowders	-	-				
	34	D. Swanagan	-	-				
	41	Rhonda Carbon	-	-				
	45	Stacy Humphrey	0-1	0-0	3	1	0	0
	52	Paulet Smith	-	-				
					0	DB		
<b>TOTALS</b>		<b>13-37</b>	<b>3-3</b>	<b>17</b>	<b>6</b>	<b>29</b>	<b>17</b>	

PERCENTS 52.0 75.0 2 TEAM REBOUNDS (NOT IN TOTAL)

PERCENTS 35.1 100.0 3 TEAM REBOUNDS (NOT IN TOTAL)

SCORE BY QTRS. Rowan County  
14-15=29  
OFFICIALS: BRENDA HUGHES & L.V. MCINTY

OWENSBORO  
15-14=29

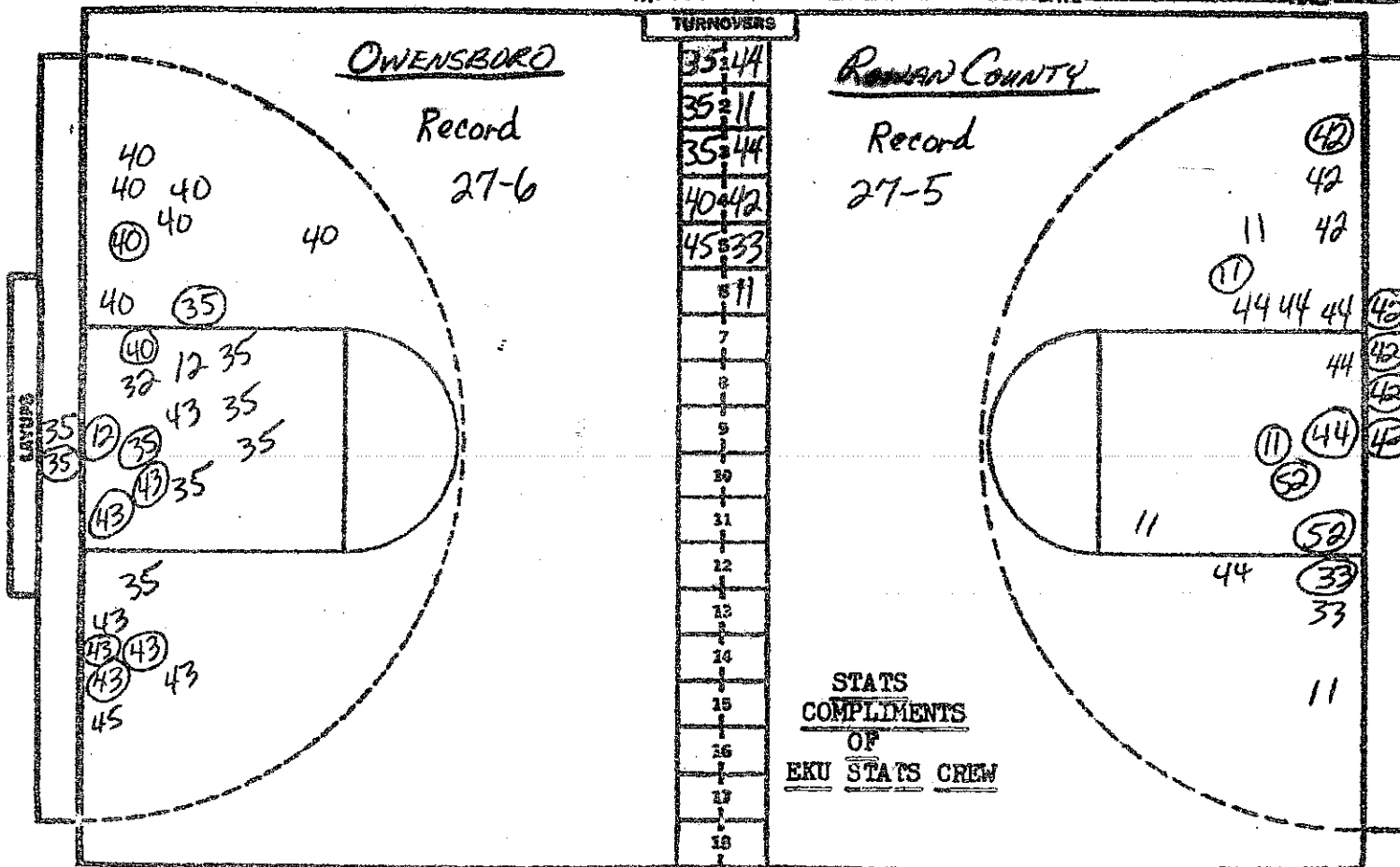
**CAGE CHART**

Owensboro

AT Rowan County

DATE March 27, 1981

FINA



STATS  
COMPLIMENTS  
OF  
EKU STATS CREW

NO.	OWENSBORO	FG-PGA	FT-FTA	REB	P	TP	A
G	35 Wendy Morton	5-18	2-4	4	4	12	8
G	40 Anita Griffith	9-23	1-2	8	2	19	0
C	12 Mary Todd Horrel	2-3	1-2	5	2	5	0
F	32 Georgia Moss	2-7	1-2	5	1	5	2
F	43 Donetta Owsley	6-13	3-5	10	5	15	0
	22 Laura Gaddis	0-0	0-0	0	0	0	0
	50 Cathy Watkins	0-0	0-0	0	0	0	0
	31 Lisa Sowders	0-0	0-0	0	0	0	0
	34 D. Swanagan	0-0	0-0	0	0	0	0
	41 Rhonda Carbon	-	-DN	P			
	45 Stacy Humphrey	0-2	0-0	4	2	0	0
	52 Paulet Smith	0-0	0-0	0	0	0	0
		-	-	2	DB		
		-	-				
		-	-				
<b>TOTALS</b>		<b>24-66</b>	<b>8-15</b>	<b>38</b>	<b>16</b>	<b>56</b>	<b>10</b>

NO.	ROWAN	FG-PGA	FT-FTA	REB	P	TP	A
G	42 Karla May	7-15	7-8	3	3	21	6
G	11 Jeanne Cornett	3-8	1-4	1	2	7	5
C	44 Jelana Haney	2-8	2-2	3	3	6	3
F	52 Debbie DeHart	5-7	0-0	9	3	10	1
F	33 Mary Beth Hamm	7-9	1-2	14	2	15	0
	53 Lori Powers	-	-DN	P			
	34 Pam Anderson	-	-DN	P			
	24 Vivian Flora	-	-DN	P			
	43 Vonda Ramey	-	-DN	P			
	35 Caryn Anderson	-	-DN	P			
	23 Cindy Lawson	-	-DN	P			
	32 Susan Barker	-	-DN	P			
		-	-				
		-	-	1	DB		
		-	-				
<b>TOTALS</b>		<b>24-47</b>	<b>11-16</b>	<b>31</b>	<b>13</b>	<b>59</b>	<b>15</b>

PERCENTS 36.4 53.3 4 TEAM REBOUNDS (NOT IN TOTAL)

PERCENTS 51.1 68.6 4 TEAM REBOUNDS (NOT IN TOTAL)

QTRS. SCORE BY HALF: **OWENSBORO** 15-14-13-14=56  
 OFFICIALS: BRENDA HUGHES & L.V. MCCOY  
 ATTENDANCE: 3500 EST.

**ROWAN COUNTY** 14-15-13-17=59